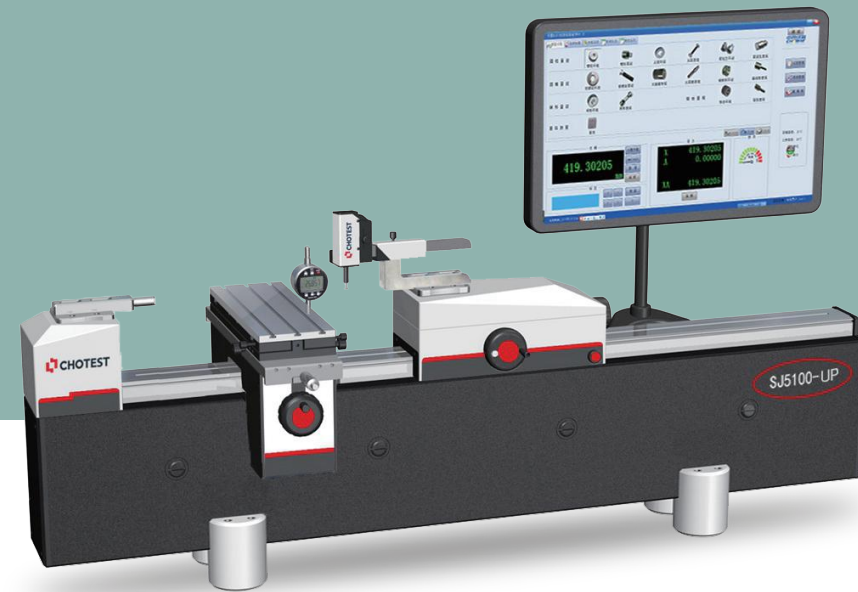


# SJ5100 Series Universal Length Measuring Machine

Absolute measurement over entire measuring range



## Application



Big plain ring gauge



Spline plug gauge



Spline ring gauge



Taper thread ring gauge



Thread ring gauge



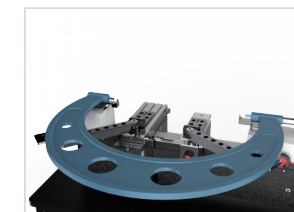
Snap gauge



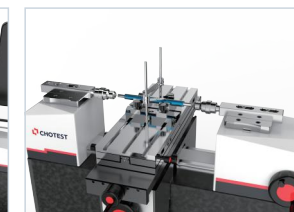
Caliper



Micrometer 3 points



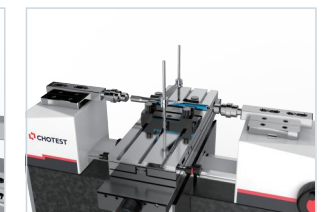
External micrometer



Setting bar



Small plain ring gauge



Internal micrometer



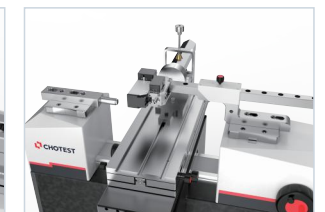
Long gauge block



Pin gauge



Inner ring of bearing



Taper thread plug gauge



Dial test gauge



Depth micrometer



Digital radius gauge



Carbon fiber comparison gauge

## Functions

1. Measure gauge blocks, thread gauges, plain gauges, Taper thread/plain gauges, pin gauge, caliper, spline gauges, setting bars, snap gauges, internal/external micrometers, feeler gauges, Dial indicators, dial bore gauge, dial test gauges, internal micrometer three points, etc.
2. Measure various gauges according to GB, ISO, BS, ANSI, DIN, JIS, API standards. With comprehensive and professional standards in database, it meets requirements of most customers.
3. Conform to a variety of verification regulations & measuring standards. All test results are generated according to relevant regulations and standards.
4. User-friendly software.
5. With centralized database management for measuring records, the operator can query and manage the measuring records according to object type, testing institution, manufacturing number, inspector, submitted institution, equipment number, inspection date and effective date.
6. Support to print multiple selected test records or test certificates from database at once time.
7. Support to export test data to Word, Excel, PDF files.
8. Data backup and restore.
9. Support user-defined template of report.
10. Support user-defined standard/tolerance.

Main Accessories



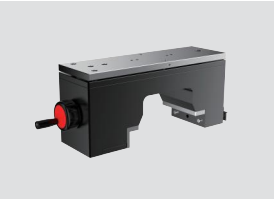
Workholder for taper gauge



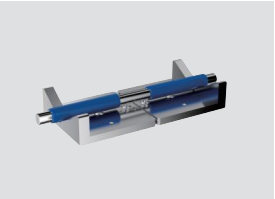
Workholder for gauge block



Workholder for micrometer



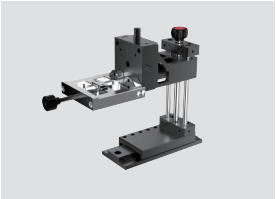
One-coordinate floating table



V-shaped block



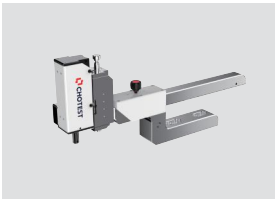
Five-axis object table



Workholder for micrometer 3 points



Measuring jaw



Inside measuring device



Ruby probes

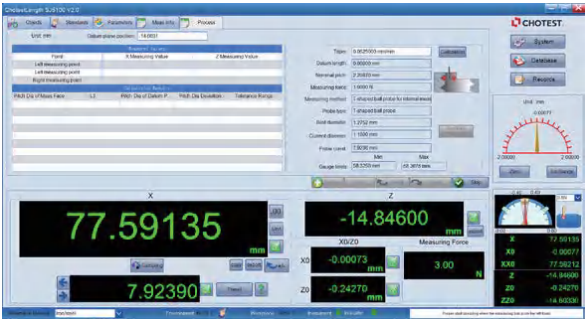
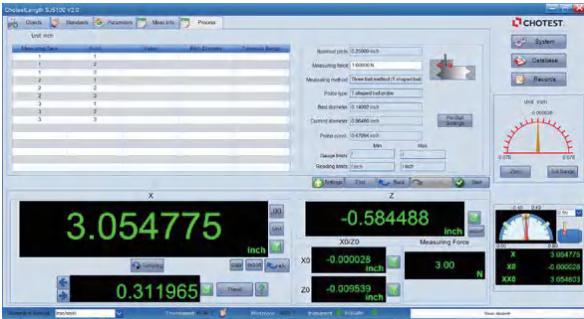
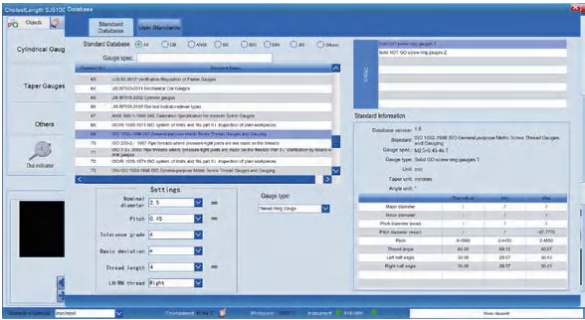


Plain/Blade anvil



Spherical anvil & Measuring bar

Software



Parameters

Model No.		SJ5100-UP300	SJ5100-UP600	SJ5100-UP1000
Absolute measurement	External Range	0-340mm	0-640mm	0-1040mm
	Internal Range	0.7~200mm	0.7~500mm	0.7~900mm
Indication Error		$\pm(0.09+L/1500)\mu\text{m}$ (Note: L is measured length in mm)		
Repeatability (2s)		$\leq 0.06\mu\text{m}$		
Resolution		0.01 $\mu\text{m}$		
Max Pitch Diameter		200mm(Ring)/250mm(Plug)		
Measuring Force		0.1N, 0.3N, 0.5N, (1~10)N continuously adjustable by hand		
Operation Environment		20 $\pm$ 0.5 $^{\circ}\text{C}$ , fluctuation $\leq$ 0.2 $^{\circ}\text{C}$ /hour, Relative Humidity: 20~60%		
Dimension		1400 $\times$ 400 $\times$ 450mm	1400 $\times$ 400 $\times$ 450mm	1700 $\times$ 400 $\times$ 450mm
Weight		150kg	150kg	180kg
Five-axis Object Table	Z-axis Range	0~50mm		
	Y-axis Range	$\pm 25\text{mm}$		
	X-axis Floation	$\pm 10\text{mm}$		
	Z-axis Rotation	$\pm 3^{\circ}$		
	Y-axis Yaw	$\pm 3^{\circ}$		
	Loading capacity	$\leq 30\text{kg}$		
	Dimension	350mm $\times$ 125mm		

Model No.		SJ5100-300A/B	SJ5100-600A/B	SJ5100-1000A/B	SJ5100-1500A/B	SJ5100-2000A/B	SJ5100-3000A/B
Absolute measurement	External Range	0~340mm	0~640mm	0~1040mm	0~1540mm	0~2040mm	0~3040mm
	Internal Range	0.7~200mm	0.7~500mm	0.7~900mm	0.7~1400mm	0.7~1900mm	0.7~2900mm
Indication Error		A series: $\pm(0.12+L/1000)\mu\text{m}$ ; B series: $\pm(0.20+L/1000)\mu\text{m}$ (Note: L is measured length in mm)			A series: $\pm(0.25+L/1000)\mu\text{m}$ ; B series: $\pm(0.4+L/1000)\mu\text{m}$ (Note: L is measured length in mm)		
Repeatability (2s)		A Series $\leq$ 0.08 $\mu\text{m}$ ; B Series $\leq$ 0.10 $\mu\text{m}$			A Series $\leq$ 0.15 $\mu\text{m}$ ; B Series $\leq$ 0.20 $\mu\text{m}$		
Resolution( $\mu\text{m}$ )		0.01 $\mu\text{m}$					
Max Pitch Diameter(mm)		200 mm(Ring)/250mm(Plug)					
Measuring Force		0.05N, 0.1N, 0.3N, 0.5N, (1~10)N continuously adjustable by hand					
Operation Environment		A series: 20 $\pm$ 1 $^{\circ}\text{C}$ , fluctuation $\leq$ 0.2 $^{\circ}\text{C}$ /hour, Related Humidity: 20~60% B series: 20 $\pm$ 2 $^{\circ}\text{C}$ , fluctuation $\leq$ 0.5 $^{\circ}\text{C}$ /hour, Related Humidity: 20~60%					
Dimension(mm)		1400 $\times$ 400 $\times$ 450	1400 $\times$ 400 $\times$ 450	1700 $\times$ 400 $\times$ 450	2200 $\times$ 400 $\times$ 450	2700 $\times$ 400 $\times$ 450	3700 $\times$ 400 $\times$ 450
Weight		150kg	150kg	180kg	310kg	360kg	410kg
Five-axis object table	Z-axis Range	0~50mm					
	Y-axis Range	$\pm$ 25mm					
	X-axis Floation	$\pm$ 10mm					
	Z-axis Rotation	$\pm$ 3 $^{\circ}$					
	Y-axis Yaw	$\pm$ 3 $^{\circ}$					
	Loading Capacity	$\leq$ 50kg					
	Dimension	350mm $\times$ 125mm					